

# Bridge

## Area Committee

## Executive Summary

September 2012

# INTRODUCTION

The Bridge Ward is situated on the south side of the city and covers the area of Meadows and part of the City Centre including London Road, Canal Street, The Broadmarsh, Market Square, Hockley and goes as far as Shakespeare Street.

The total population of the Bridge Ward is 13250 (Office for National Statistics ONS-2010)

**Population by Ethnic Group** - 72% (6518) being White British, the largest minority group is Pakistani with 6.9% (627), followed by Black Caribbean 5.9% (537), Indian 2.9% (262) – (Census 2001)

**Population by Religion** – 52.1% (4734) Christians -, 8.6% (786) Muslim, 1.6% (141) Sikh, 1.1% (101) Hindu, 27.0% (2456) no Religion – (Census 2001)

The Bridge Ward has a mixed population and communities get on well with each another. Recently the area has seen an increase of new and emerging communities mainly from Eastern European countries as well as from Africa.

There are a number of residential areas across the ward including Cliff Road, Private estate off Castle Marina, Turnyes Quays, flats in the city centre and the Embankment. The largest community residential area is in the Meadows.

There are two distinct areas within the Meadows, The Old Meadows and The New Meadows. Old Meadows has the traditional open street layout with terraced housing in the main, where as the New Meadows was built with the Radbourne layout where a frontage of a property will face the rear of another property. This area also has walkways that run under and to the side of properties with many cut through ways and options.

The Meadows has three primary schools which include Greenfields, Riverside and Welbeck. With the steady increase in the number of children of primary school age, Nottingham City Council is consulting with

parents/carers, staff, governors and the wider community about the possibility of expanding Riverside Primary School from a 210 place primary school to a 420 place school. If this proposal is approved, building works will take place to expand the current building to accommodate the increase in numbers. It is estimated that the building works will be completed for the autumn term 2014.

The Meadows has two Police Beat Areas which are covered by the Neighbourhood Policing Teams and they are The Meadows and Riverside. The Riverside Beat covers the New Meadows and the industrial estate off Queens Drive and Castle Marina.

The area is home to some of the best parks and open spaces across the city with Queens Walk Recreation Ground once again being honoured with the Green Flag status this year, and the Victoria Embankment which is used by people from across the city and wider. The Embankment has recently had the Flood Defence works carried out, the installation of three artificial cricket pitches and a new play area.

A Master Plan is also being put in place for additional recreational/resources to be introduced on Victoria Embankment, with a series of consultation meetings/events taking place to obtain the views and desires of local people.

The Meadows is going through some major developments at the moment including the Net Phase Two line with works taking place at various locations, the Decommissioning works by NCH and the Master Plan for the Victoria Embankment.

This report will also highlight a range of projects/activities that have been delivered between September and November 2012, with the main emphasis on the Week of Action which was delivered by a range of partners during the week of 17<sup>th</sup> September – 21<sup>st</sup> September. In total 29 projects were delivered which ranged from Environmental, Enforcement to Sports and Engagement.

The Week of Action was delivered around the five core themes of Nottingham Plan 2020 and addressed each of the local priority under each heading. These priorities are those that have been prioritised by citizens through consultation events, meetings, feedback and the Ward Councillors as Champions of Place.

# Ward priorities – Progress update

Theme	Priority	Key Actions
SAFER	ASB	<p>Week of Action Partner Services Event delivered for citizens</p> <p>6 people signed up for the Neighbourhood Alert Scheme run by the Police</p> <p>Licensing Compliance Operation carried out at various outlets with all premises refusing sale or challenging the young girl on her age</p>
	Drugs	<p>Motorbike operations delivered by Off Road Team – 1 bike taken</p> <p>High Visibility Pro Active Patrols at known hotspots – 5 incidences of ASB in hotspot areas</p>
NEIGHBOURHOODS	Fly Tipping	<p>Week of Action Partner Services Event delivered for citizens – WOA cleared Alleyways on Glapton, Terraces, Holgate, Woolmer, Beauvale &amp; WCW. 250 properties leaflet and letter dropped on recycling, rubbish and fly tipping.</p> <p>Cllr's Ward Walk – 5 fly tips picked up.</p> <p>Several properties reported for rubbish and fly tipping</p> <p>57 meters of general graffiti removed – 7 meters of racist graffiti removed – 61 small signs removed from lamp posts – 2 spillage of paint removed</p> <p>Gully works carried out at several locations</p> <p>4.5 tonnes of material removed from alleyways and walkway to side of Osier and Pitcairn</p> <p>62 fly tips removed pro-actively – 19 reported fly tips reported by citizens and partners (both figures also include side waste reported as fly tipping)</p> <p>2 tonnes of material removed from Queens Walk Community Centre car park and Birdcage Walk</p> <p>Adoption of land next to bay windows considered by</p>



		Highways for making enforcement viable for fly tipping
FAMILIES	Dog Fouling	<p>No Dog Fouling Operations carried out as Community Protection were engaged with the Electoral Register door knocking during Week of Action</p> <p>Dog Fouling operations planned for October and November around hotspots</p> <p>Fido (dog poo cleaner) used during Week of Action on several hotspot areas including Wilford Grove, Vic Embankment, Bathley Street, Bunbury Street, Woodward Street, Turney Street.</p>
	More accessible services to people	<p>Week of Action Partner Services Event delivered for citizens enabling services to reach out local people</p> <p>22 service providers attended event</p> <p>43 Citizens attended (service users)</p> <p>30 children and 3 staff from Greenfields School took part</p> <p>12 children and 3 staff from Tiny Toes attended</p> <p>Children and Families Team (via Meadows Youth Club) took 26 young people on 2 outings</p>
	More training & job opportunities for young people	<p>Employment Advisors at Partners Event</p>
HEALTH	Obesity	<p>Week of Action Partner Services Event delivered for citizens. Community Nurse and Pharmacist carried out health checks with information and advice given</p> <p>5 people signed up for a health check with the pharmacist at the Partner Services Event</p> <p>5 people made Decade of Better Health (DOBH) pledges</p>
	Increased physical activities	<p>1 volunteer recruited</p> <p>Engaged with 15 residents at the Change Maker Table at the Partner Services Event</p> <p>Health partners in attendance at the event on Friday</p>

## WORKING

More job opportunities for young people

were: Slimming World, Heart Health Nurse, Nutrition Team, Wellbeing Plus & Portland Leisure Centre

Week of Action Partner Services Event delivered for citizens. Promoted the advice and employment programmes to local residents and partners. Engaged with 20 people.

1/ One Stop Shop promote all opportunities 18 – 24 from the Nottingham Jobs Fund and the apprenticeship network.

2/ Direct 1-1 support for young people who are NEET Through the IGNITE Project. Currently supporting over 80 young people through this project.

3/ One Stop Shop Thursday work club is open to all who are looking for work every Thursday 2pm – 5pm

4/ One to One support is available to all through (IAG) Information Advice and Guidance, where an individual tailored action plan is created to support the individual to move forward into Training and Work.

5/ Targeted individual Support is available to Families where there is a record of long term worklessness within the household. Employment Advisors at the One Stop Shop support the families by working in partnership with many key providers to remove barriers such as Debt, Housing, Health issues, drug and alcohol abuse, Training, Voluntary work and employability.

6/ Promoted locally and took part in the City Councils Job Fair on 25<sup>th</sup> September 2012.

More training opportunities for local people

# Community Engagement

## Events Delivered

Event	Lead Partners	Date/Time	Venue
Week of Action – A series of enforcement, environmental & engagement projects delivered across the week	Nottingham City Council NCH, Police, Health, Family & Community Team, Probation , Nott's County FC, Nott's Wildlife Trust	Monday 17 <sup>th</sup> September – Friday 21 <sup>st</sup> September 2012	Across the Meadows
Partner Services Event	NCC, FCT, Health Promotion, NCH, Police, TRA	21 <sup>st</sup> Sep 2012 – 1.00pm till 4.00pm	Meadows Children Centre
Primary Schools Football Tournament	Notts County Football in the Community, NCC, Primary schools (Greenfields, Welbeck & Riverside)	20 <sup>th</sup> Sep 2012 – 3.30pm till 5.00pm	Portland Leisure Centre
Horse Riding – 12 young people	FCT,NCC, Meadows Youth Club	21 <sup>st</sup> September 2012 – All day	West Bridgford Stables
Visit to Lockwell Hill Adventure Centre – 14 young people	FCT, NCC, Meadows Youth Club	13 <sup>th</sup> October 2012 – All day	Lockwell Hill Adventure Centre

## Future Events and Activities Planned

Event	Lead Partners	Date/Time	Venue
Streamlining Investment for the Voluntary & Community Sector	NCC	18 <sup>th</sup> October 2012 – 1.00pm- 4.00pm	Indian Community Centre
Budget Consultation Meeting	NCC	28 <sup>th</sup> November 2012 – 7.00pm till 8.30pm	Queens Walk Community Centre
Christmas Event – Market Fair	MPT	8 <sup>th</sup> December 2012 – 1pm – 3pm	Bridgeway Shopping Centre

# Community Engagement

## Ward Walks

Area/Estate	Date/Time	Meeting Point
Meadows – Lammas, Uppingham, Arkwright Walk etc	Thursday 8 <sup>th</sup> November 2012 – 11.00am	Meeting point outside One Stop Shop
Old Meadows – Glapton, Bathley, Beauvale	Thursday 13 <sup>th</sup> December 2012 – 11.00am	Corner of Glapton & Bathley Street
Meadows – Collygate, Felton, Pyatt, Turney	Thursday 24 <sup>th</sup> January 2013 – 11.00am	Corner of Collygate and Bathley Street

## Community Meetings

Group	Date	Venue
Old Meadows Tenants & Residents Association (OMTRA) meeting with Neighbourhood Services and Community Protection	Monday 3 <sup>rd</sup> September 2012 – 6.45pm till 8.15pm	Holgate Road –Chair’s address
Community Meeting	Thursday 6 <sup>th</sup> September 2012 – 6.00pm till 8.00pm	Queens Walk Community Centre
Area Committee meetings	12 <sup>th</sup> Sep 2102 – 7.00p 21 <sup>st</sup> November 2012 -7.00pm	Clifton Leisure Centre Loxley House
New Meadows Tenants & Residents Association (NMTRA)	13 <sup>th</sup> September 2012 – 6.30pm 11 <sup>th</sup> October 2012 – 6.30pm 8 <sup>th</sup> November 2012 – 6.30pm	Lothmore Court Lothmore Court Lothmore Court
Meadows Partnership Trust AGM	12 <sup>th</sup> November 2012 – 6.30pm	The Embankment Club
Joint TRA’s Meeting	13 <sup>th</sup> November 2012 – 11.00am	Meadows Children Centre
OMTRA AGM	20 <sup>th</sup> November 2012 – 7.00pm	Meadows Library
Community Meeting	13 <sup>th</sup> December 2012 – 6.30pm	Queens Walk Community Centre

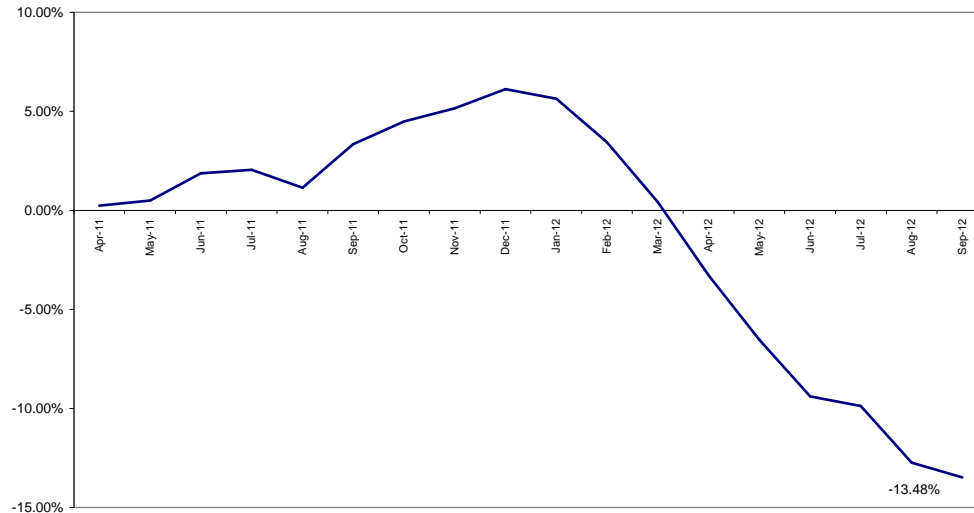


# Finance

- **Ward Councillor Budgets** (as at 15/10/2012)  
Total amount allocated this period £4,040.00 (Sep – Nov)  
Budget remaining unallocated (inc. of 2012-2013 allocation): £10,510.00
- **Area Capital Fund**  
Total amount allocated this period £63,800 (schemes approved at September Area Committee)  
Robin Hood Way – Handrail - £1500.00 (scheme for approval at November AC)  
Budget remaining unallocated - £0734.00 (inc. of 2012-2013 allocation)
- **Others – Section 106, NCH Environmentals, Other Funding**

# Crime

All Crime in Bridge -  
% Change over 2010/11 Baseline (Rolling 12 Month)



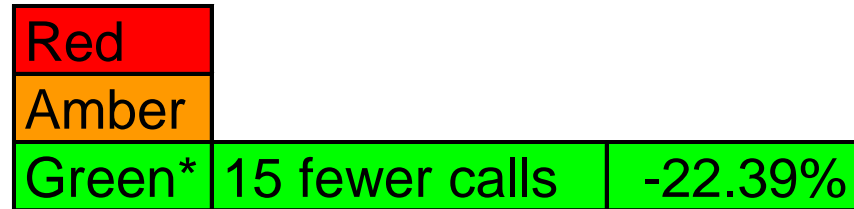
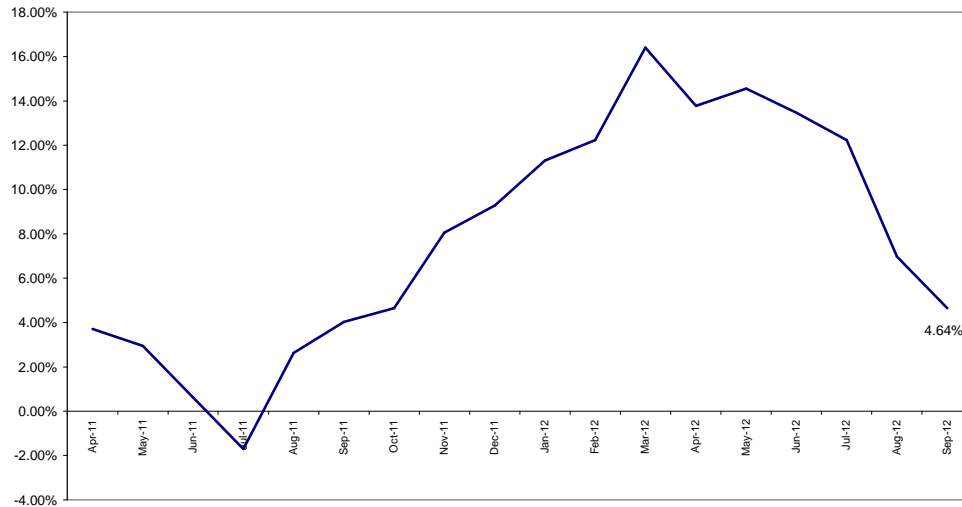
Red		
Amber		
Green*	9 fewer crimes	-7.83%

\*Refers to September 2012 compared to September 2011

- For September 2012 compared to September 2011, All Crime in Bridge is down 8% (9 crimes)
- Year to date Bridge is down 24% against the performance of All Crime in the previous year.
- The above graph shows that in September 2012 Bridge had a 13% reduction in All Crime over a long term 2010/11 baseline. The graph also indicates that performance in that month was not an anomaly.
- In terms of rate (per 1000 of population) Bridge is ranked 2<sup>nd</sup> out of the 20 wards for All Crime. Bridge also has the highest rate of Theft of the 20 wards.

# All ASB

All ASB in Bridge -  
% Change over 2010/11 Baseline (Rolling 12 Month)



\*Refers to September 2012 compared to September 2011

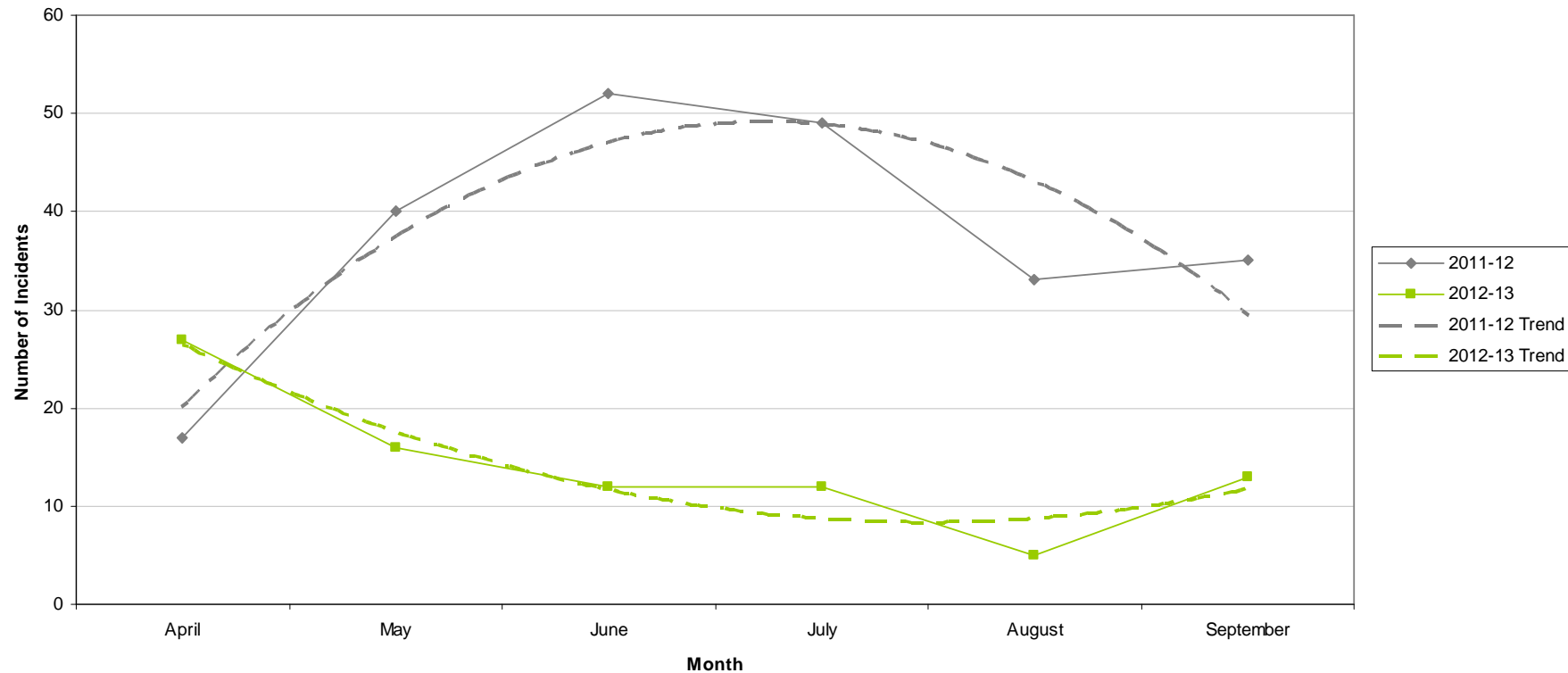
- In September 2012 (compared to September 2011) All ASB in Bridge was **down by 22%** (15 calls).
- Year to date All ASB in Bridge is **down by 18%** against the previous year.
- Bridge is showing a **5% increase** against a long term 2010/11 baseline. However, All ASB has reduced since the spike in March 2012, as is highlighted in the above graph.
- The majority (75%) of All ASB calls received in September 2012 for Bridge fell into the **'Nuisance'** category. This finding is consistent with the Division as a whole.

# Graffiti Reports

<b>RED</b>		
<b>AMBER</b>		
<b>GREEN</b>	<b>22 fewer reports</b>	<b>-63%</b>

- All data refers to a comparison with the previous year's month
- It is proposed that performance over time graphs be used for each indicator
- Historic data for comparison is not available for dog fouling

Incidents of Graffiti

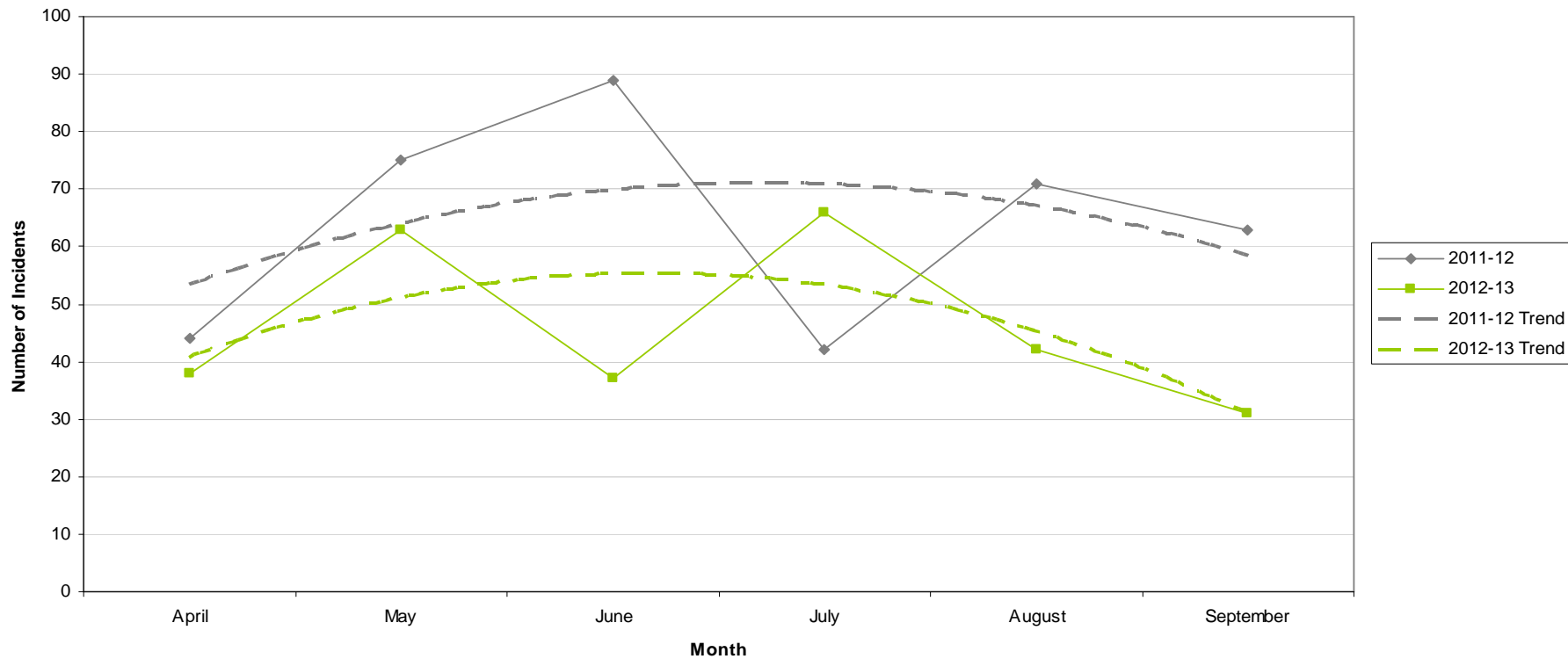


# Fly Tipping

<b>RED</b>		
<b>AMBER</b>		
<b>GREEN</b>	<b>32 fewer reports</b>	<b>-51%</b>

- All data refers to a comparison with the previous year's month
- It is proposed that performance over time graphs be used for each indicator
- Historic data for comparison is not available for dog fouling

Incidents of Fly Tipping

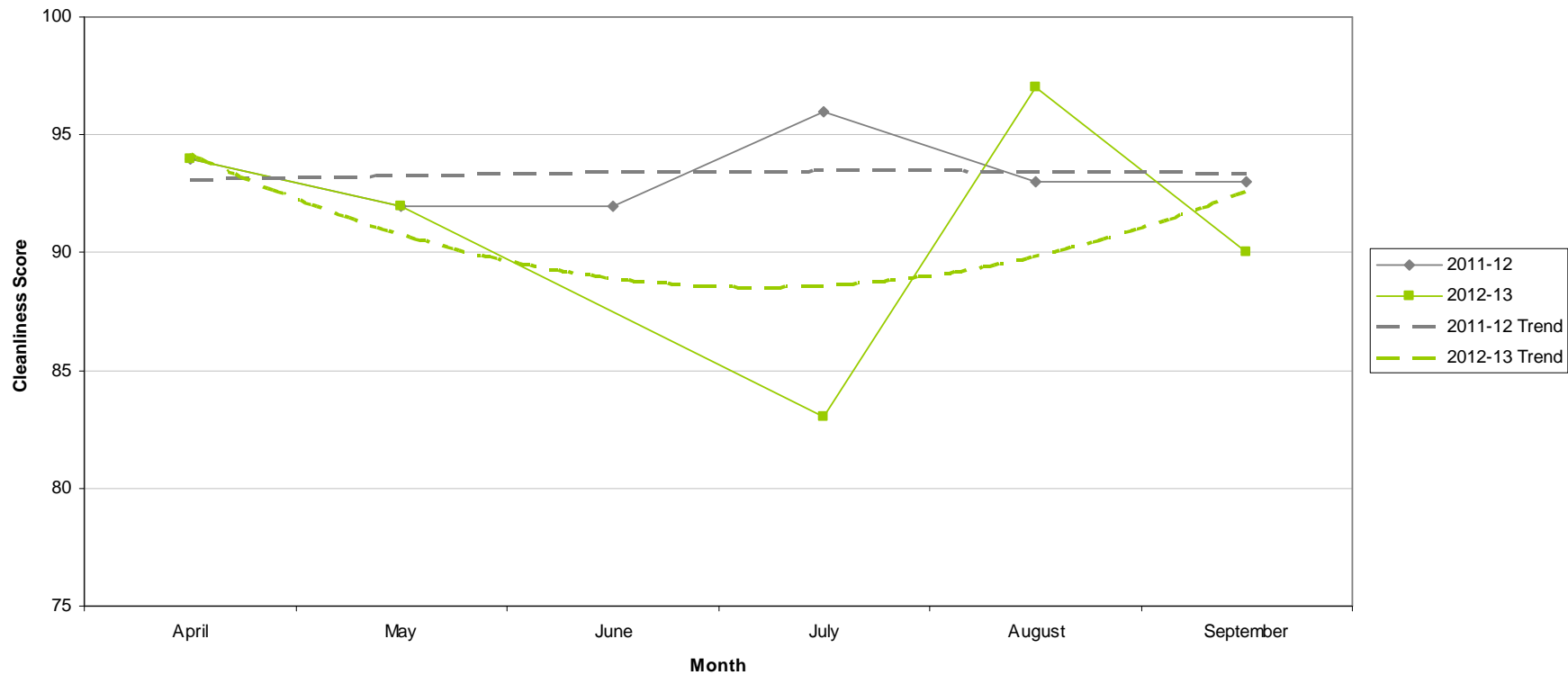


# Cleanliness Index

<b>RED</b>	<b>90</b>	<b>3 point decrease</b>
<b>AMBER</b>		
<b>GREEN</b>		

- All data refers to a comparison with the previous year's month
- It is proposed that performance over time graphs be used for each indicator
- Historic data for comparison is not available for dog fouling

Cleanliness Index





# Unemployment Rate

Ward	Aug-12			Change in last month		Change in last year	
	Number	Rate	City Rank	Number	%	Number	%
Arboretum	830	7	9	12	1.5	86	11.6
Aspley	1,197	10.6	1	15	1.3	57	5
Basford	730	6.6	11	21	3	25	3.5
Berridge	1,090	7.5	6	17	1.6	115	11.8
Bestwood	989	8.7	4	-26	-2.6	-19	-1.9
Bilborough	762	7.3	7	-36	-4.5	6	0.8
<b>Bridge</b>	<b>756</b>	<b>7.2</b>	<b>8</b>	<b>6</b>	<b>0.8</b>	<b>15</b>	<b>2</b>
Bulwell	1,045	9.6	2	-4	-0.4	32	3.2
Bulwell Forest	444	4.9	15	-12	-2.6	-5	-1.1
Clifton North	381	4.3	16	-14	-3.5	27	7.6
Clifton South	506	5.8	12	12	2.4	-11	-2.1
Dales	883	7.6	5	-10	-1.1	8	0.9
Dunkirk and Lenton	262	2.4	19	-5	-1.9	-27	-9.3
Leen Valley	351	5	14	13	3.8	26	8
Mapperley	750	6.7	10	31	4.3	8	1.1
Radford and Park	776	4.1	17	-19	-2.4	36	4.9
Sherwood	552	5.1	13	-19	-3.3	-71	-11.4
St Ann's	1,242	9	3	13	1.1	29	2.4
Wollaton East and Lenton Abbey	144	1.5	20	9	6.7	4	2.9
Wollaton West	262	2.8	18	29	12.4	25	10.5

Source: ONS claimant count August 2012 (from Nomis)

*This is an edited version of a report produced by: Geoff Oxendale, Information and Research Officer, Nottingham City Council*

# Housing



## Bridge Ward

### Empty properties - Bridge Ward

Indicator	Current Target	2010/11	2011/12	2012/13		
		Value	Value	Value	Status	Trend
Average void re-let time for Bridge Ward	26	43.72	117.33	32.63		
Lettable voids Bridge Ward		32	23	23		
Empty properties awaiting decommission in Bridge Ward		3	30	68		

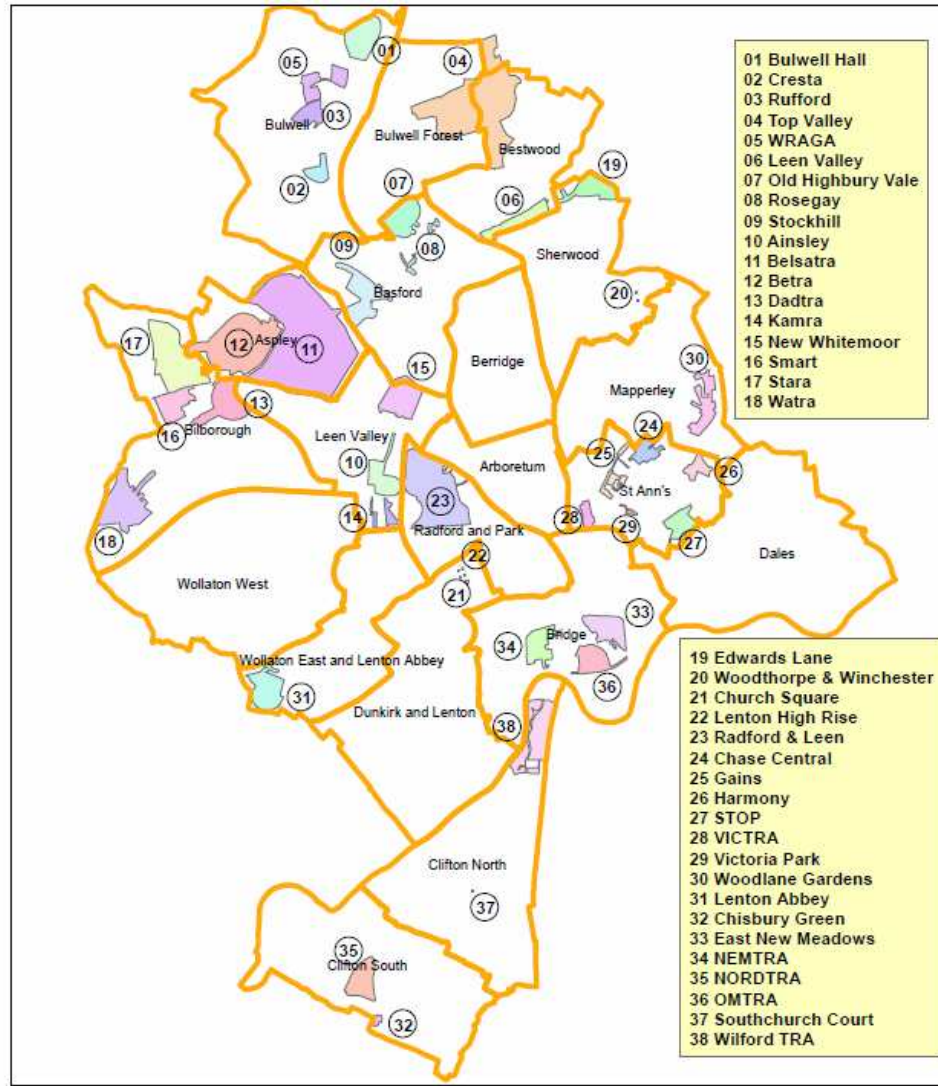
### Estate star ratings (from Tenant Service Inspectors)

Indicator	2010/11		2011/12		2012/13		
	Value	Status	Value	Status	Value	Status	Trend
Estate star rating - Meadows	3 Star		3 Star		3 Star		

### Rent Collection - Clifton

Indicator	Current Target	2010/11	2011/12	2012/13		
		Value	Value	Value	Status	Trend
Rent charged that has been collected - Clifton office area	100%	100.9%	101.4%	99.8%		

# Housing



Map of Tenants and Residents Associations by Ward

# Community Protection

In Bridge in the last month there was the following court outcome:

- Injunction for theft.

*Data has been received from Community Protection and where postcodes have been listed these have been geo-coded and mapped to determine the Ward. All addresses relate to the address of the Perpetrator.*

*FPNs are not currently available at Ward level.*

# Methodology

Crime Data and ASB calls have been extracted from the Police systems and mapped to ascertain which Ward they occurred in.

Due to the dates of the meetings, data for all Wards was extracted at the same time at the start of the month - and as such is not officially 'validated' data.

Where possible the most recent data is used, although for some areas this may be a month further in arrears.

Discussions continue with other agencies regarding what further data can be included.